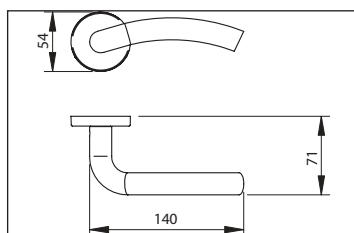


AElement Handles**Model S**

Available for European and ANSI mortise locks.

For complementary doors, without electronics, a special spindles and screws pack needs to be ordered separately. See last page.



IM
Satin stainless steel
type

SALTO S handle for AElement handle set.

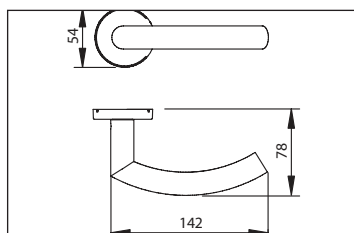
Round rose

To be fitted with the split spindle provided with the AElement electronics.

Prices - Gross prices

Description	Reference
SALTO S handle satin stainless steel type finish - 8mm	R 1 S S R I M 0 8 0 x
SALTO S handle PVD satin brass type finish - 8mm	R 1 S S R P M 0 8 0 x
SALTO S handle antique brass type finish - 8mm	R 1 S S R I A 0 8 0 x
SALTO S handle chromium black type finish - 8mm	R 1 S S R N E 0 8 0 x

Model	Rose	Finish	Square spindle	Thumbturn	Handing
R1SS For European mortise locks	R	IM	08 8mm	0 without thumbturn	L left hand
		PM			R right hand
		IA			
		NE			
R3SS For Ansi mortise locks	R	IM	08 8mm	0 no thumbturn	L left hand
		PM		1 with thumb- turn	R right hand
		IA			
		NE			

Model T

Available for European and ANSI mortise locks.

For complementary doors, without electronics, a special spindles and screws pack needs to be ordered separately. See last page.



IM
Satin stainless steel
type

SALTO T handle for AElement handle set.

Round rose

To be fitted with the split spindle provided with the AElement electronics.

Prices - Gross prices

Description	Reference
SALTO T handle satin stainless steel type finish - 8mm	R 1 S T R P M 0 8 0
SALTO T handle PVD satin brass type finish - 8mm	R 1 S T R P M 0 8 0
SALTO T handle antique brass type finish - 8mm	R 1 S T R I A 0 8 0
SALTO T handle chromium black type finish - 8mm	R 1 S T R N E 0 8 0

Model	Rose	Finish	Square spindle	Thumbturn	Handing
R1ST For European mortise locks	R	IM	08 8mm	0 without thumbturn	- no handing reversible
		PM			
		IA			
		NE			
R3ST For Ansi mortise locks	R	IM	08 8mm	0 no thumbturn	- no handing reversible
		PM		1 with thumb- turn	
		IA			
		NE			